

Cielos tensados

Catalogo / La impresión doble cara



No 3

La impresión doble cara



art 3001



La portada

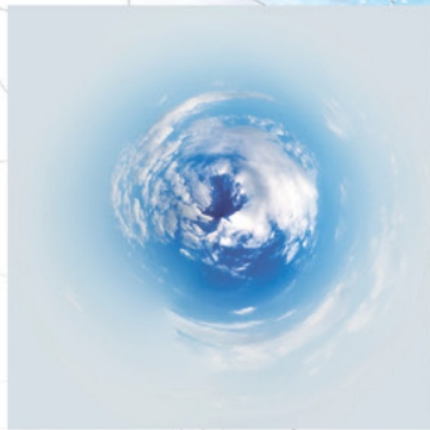


El reverso

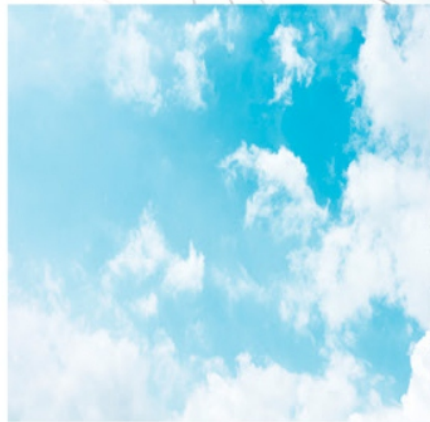


art 3002

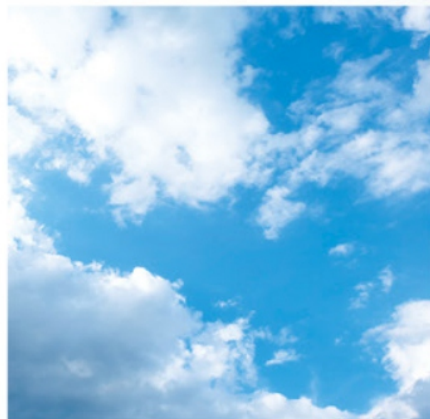




art 3003



art 3004

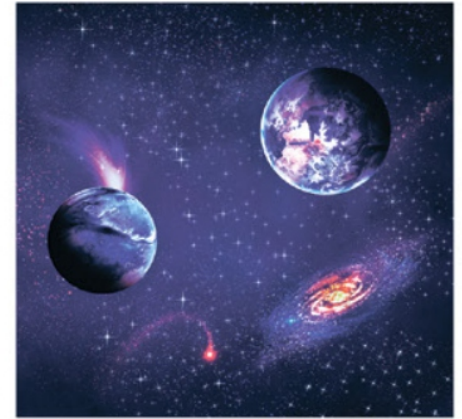


art 3005

La impresión doble cara



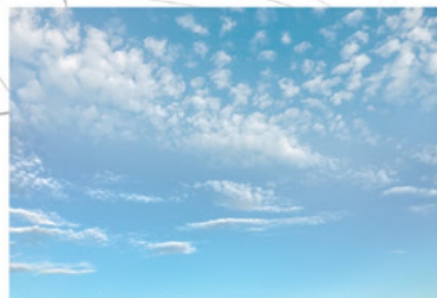
art 3006



art 3007



art 3008

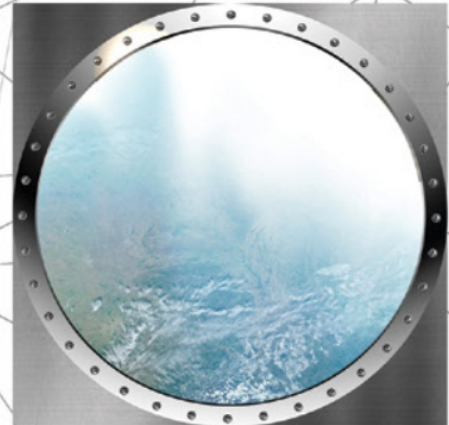




art 3009



art 3010



art 3011



La impresión doble cara





art 3012



La impresión doble cara



art 3013



art 3014





art 3015



art 3016



art 3017



art 3018



La impresión doble cara



art 3019



art 3020



art 3021



art 3022

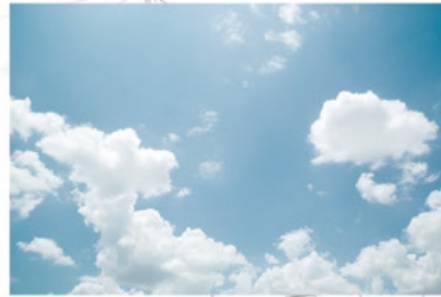




art 3023



art 3024



art 3025



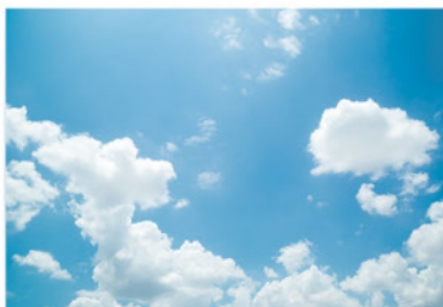
art 3026



La impresión doble cara



art 3027



Tela 2 transparente



art 3028

Combinado



Tela 1
la portada

Tela 1
el reverso



art 3029 Combinado



Tela 2 transparente



Tela 1
la portada



Tela 1
el reverso



art 3030



La impresión doble cara



art 3031





art 3032



art 3033



art 3034



La impresión doble cara



art 3035



art 3036





art 3037



art 3038



art 3039



art 3040



La impresión doble cara



art 3041



art 3042





art 3043



art 3044



art 3045



La impresión doble cara



art 3046



art 3047



art 3048



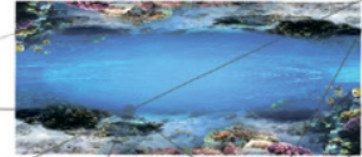


art 3049

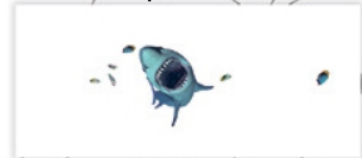
Combinado



Tela 2 transparente



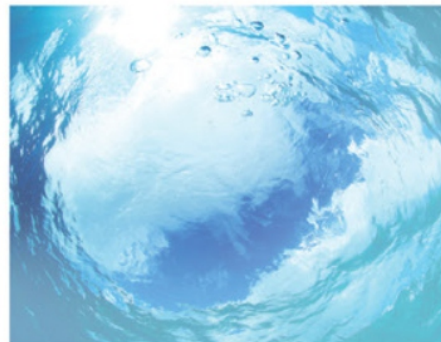
Tela 1 la portada



Tela 1 el reverso

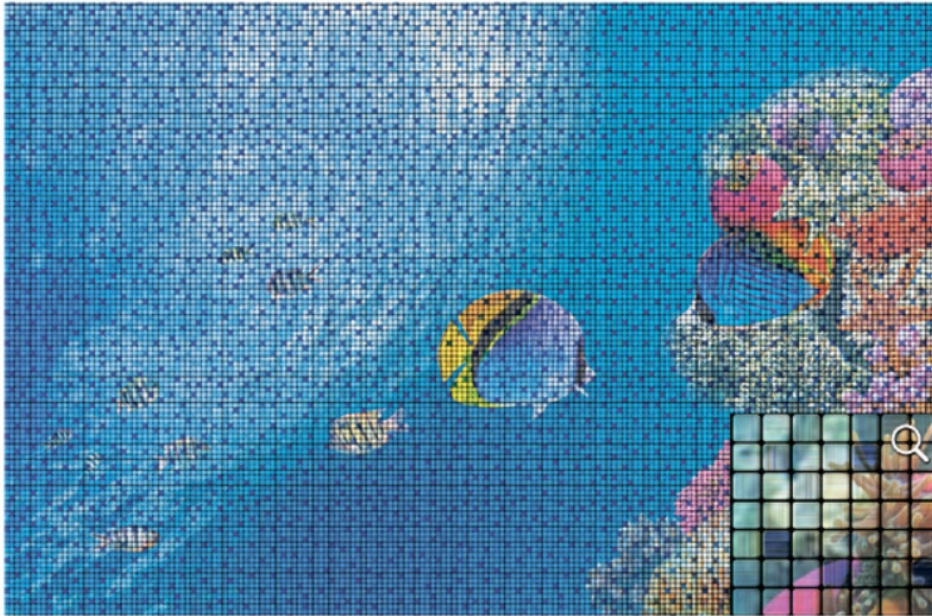


art 3050

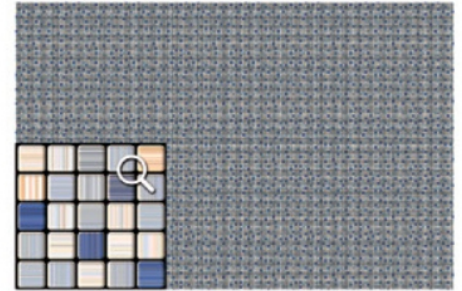


art 3051

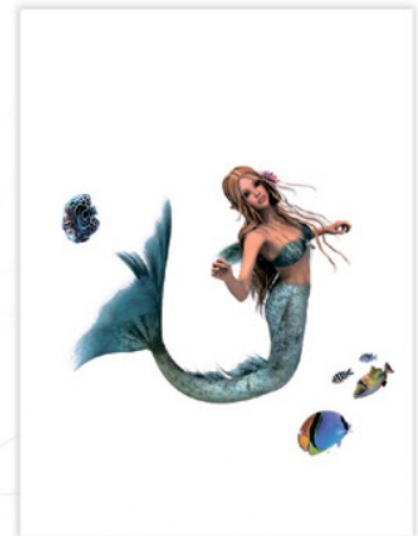
La impresión doble cara



art 3052

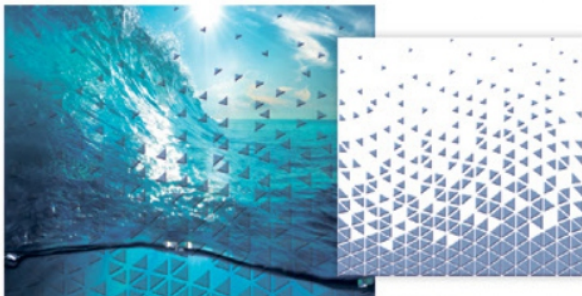


art 3053





art 3054



art 3055



La impresión doble cara



art 3056



art 3057





art 3058



art 3059



art 3060



art 3061



La impresión doble cara



art 3062



art 3063



art 3064





art 3065



art 3066



art 3067



art 3068



La impresión doble cara



art 3069

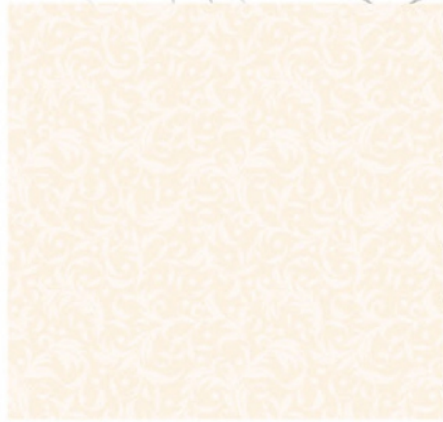




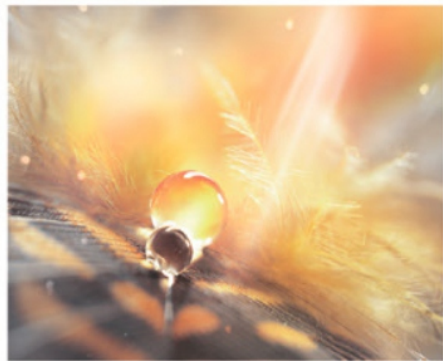
art 3070



art 3071



art 3072



La impresión doble cara



art 3073



art 3074



art 3075





art 3076



art 3077



art 3078

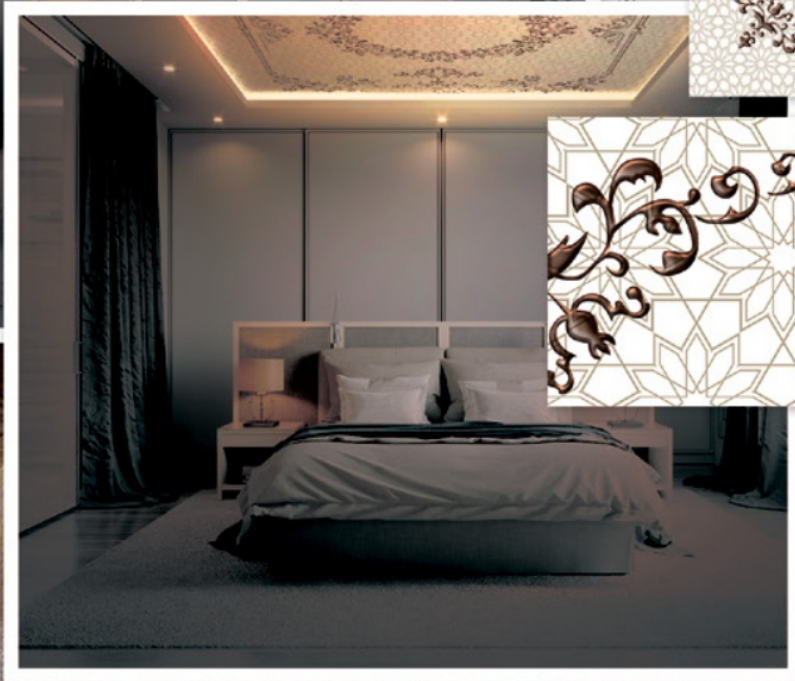
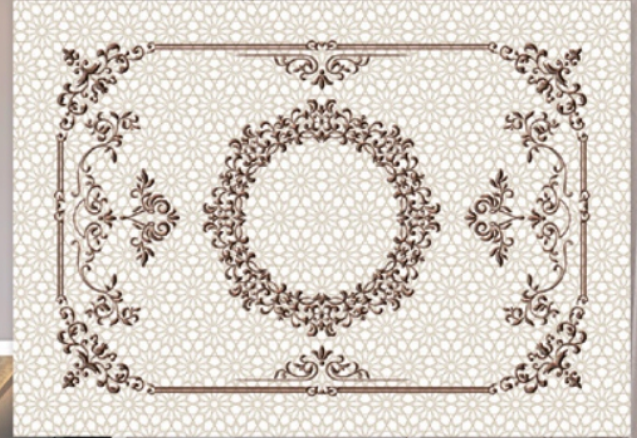
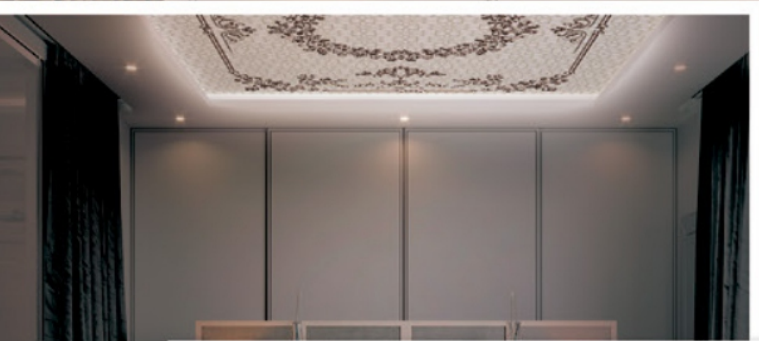


art 3079



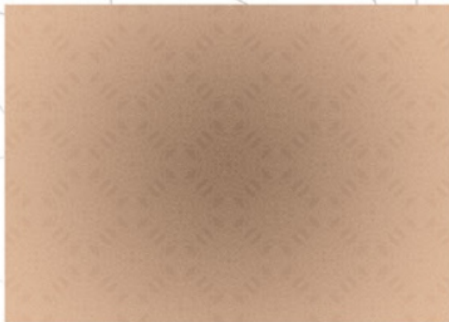
La impresión doble cara

art 3080

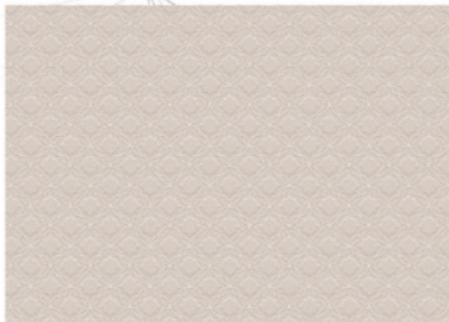




art 3081



art 3082



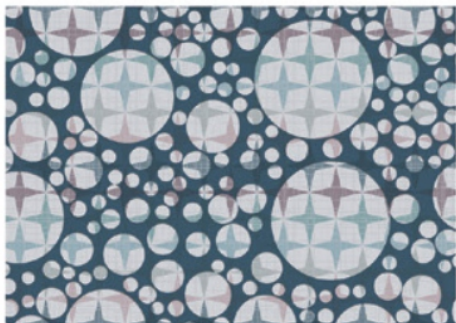
art 3083



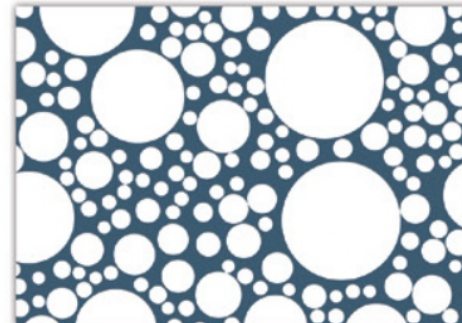
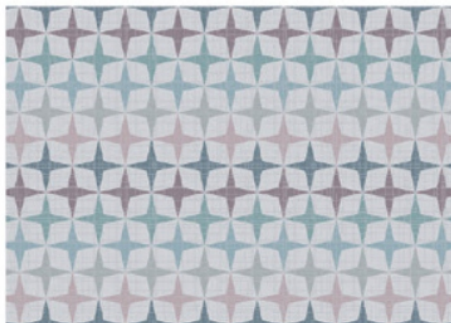
art 3084



La impresión doble cara



art 3085



art 3086



art 3087





art 3088



art 3089

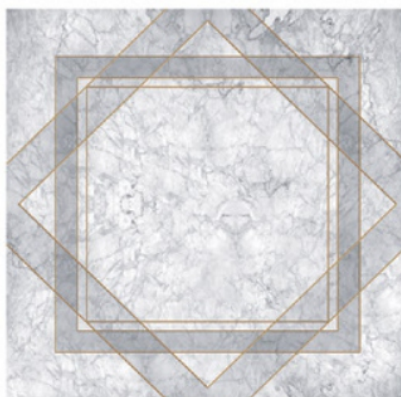


art 3090

La impresión doble cara



art 3091



art 3092



art 3093





art 3094



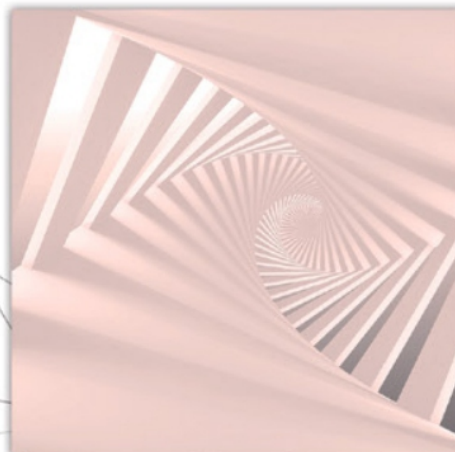
La impresión doble cara



art 3095



art 3096

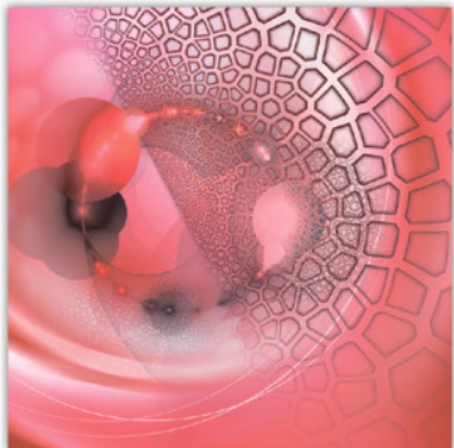
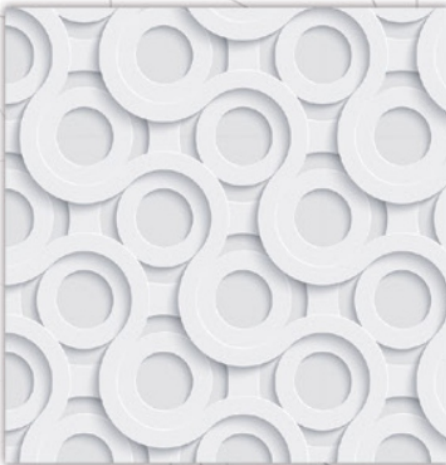


art 3097

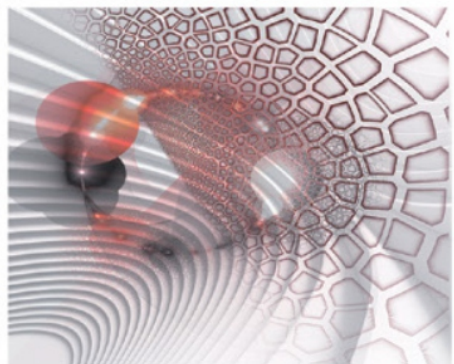
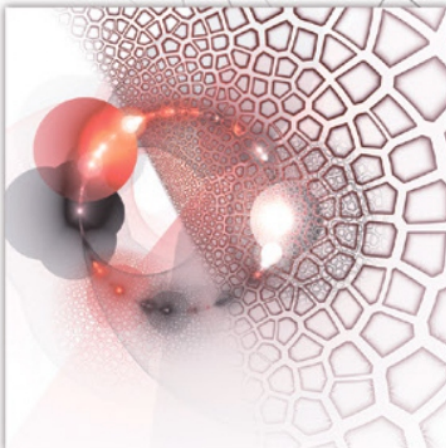




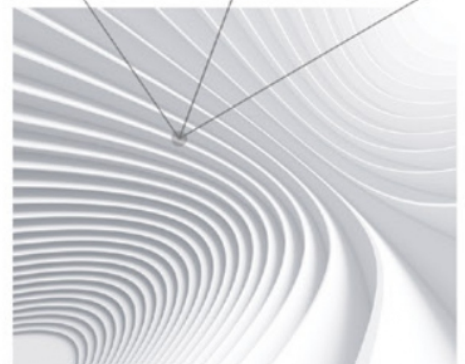
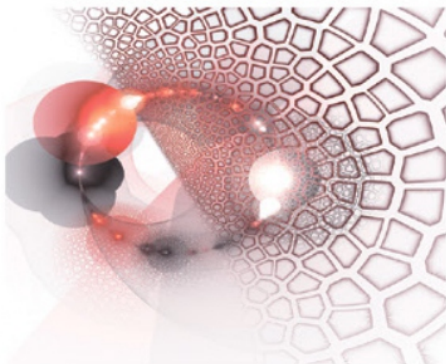
art 3098



art 3099

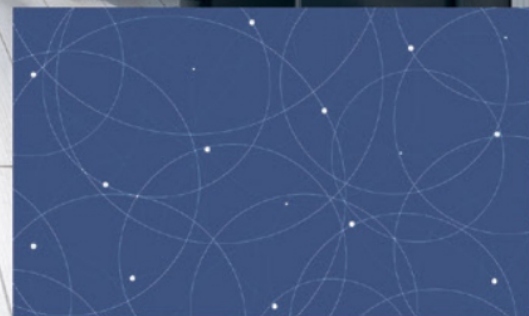


art 3100



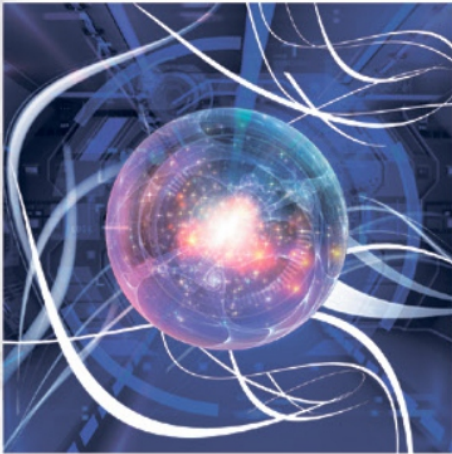
La impresión doble cara

art 3101





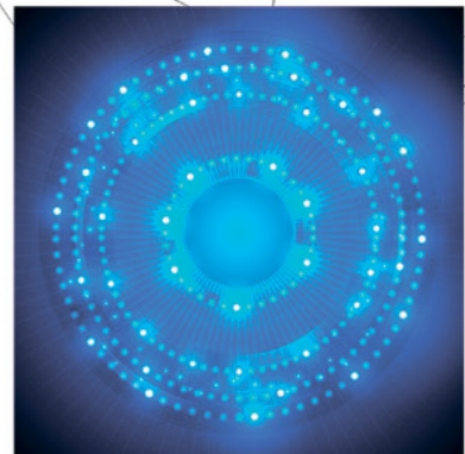
art 3102



art 3103



art 3104



La impresión doble cara



art 3105



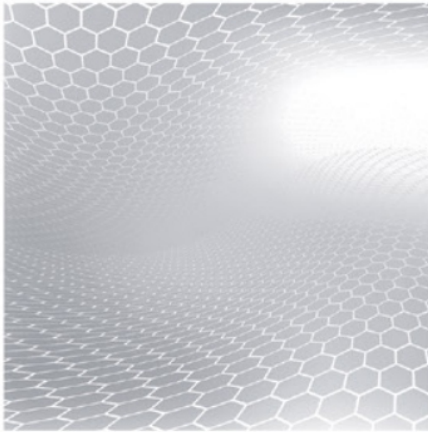
art 3106



art 3107



art 3108



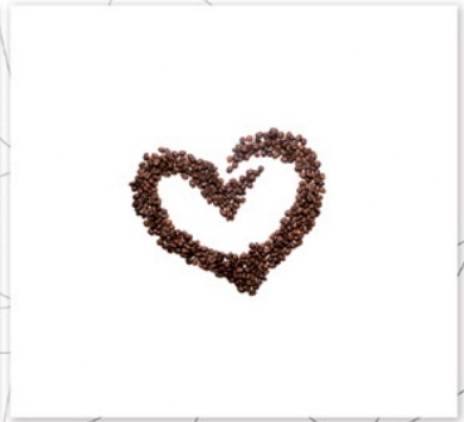
La impresión doble cara

art 3109





art 3110



art 3111



art 3112



La impresión doble cara



art 3113

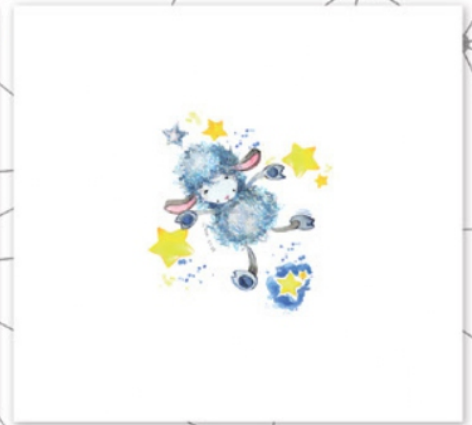




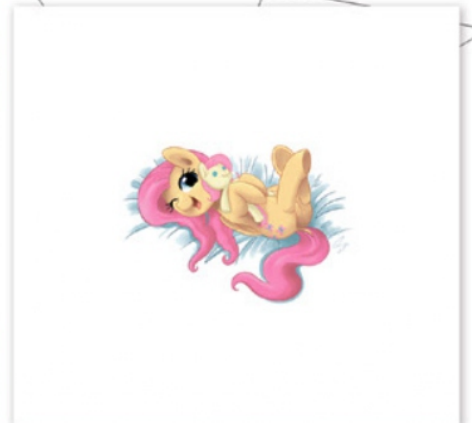
art 3114



art 3115



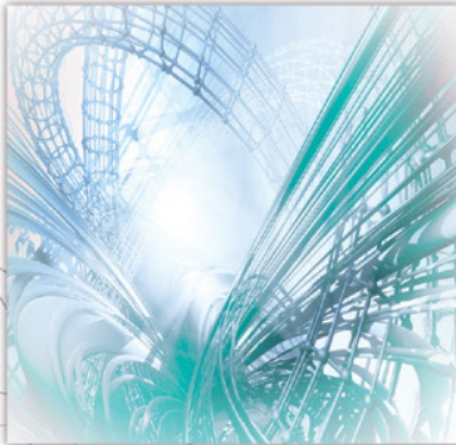
art 3116



La impresión doble cara



art 3117



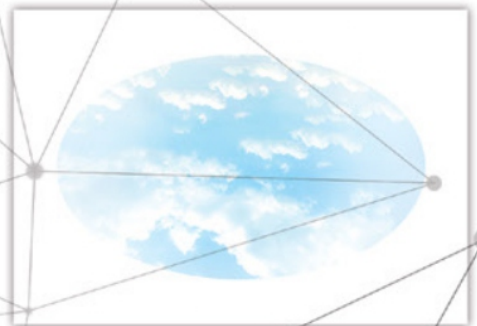
art 3118



art 3119



art 3120



art 3121



art 3122

La impresión doble cara



art 3123



art 3124



art 3125

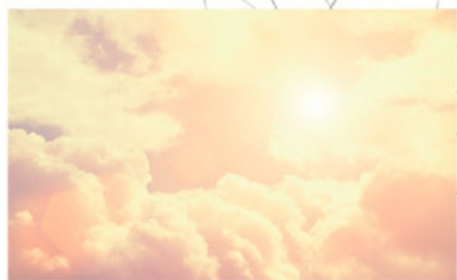




art 3126



art 3127



art 3128



La impresión doble cara



art 3129

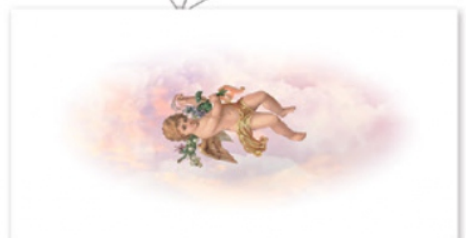




art 3130



art 3131



art 3132

La impresión doble cara



Lineales de aluminio con diodos



Tipo de techo sin iluminación



Tipo de techo con iluminación

Fotos del proyecto terminado

Para iluminar los techos con impresión doble cara, se utilizan lineales LED de aluminio con lente de gran ángulo.

- La iluminación uniforme con la distancia mínima hasta el techo
- Alta seguridad por la base de aluminio y poca cantidad de los diodos
- Mas brillo
- El montaje rápido y sencillo

Características técnicas

Las dimensiones: 950x17x2mm
Cantidad de los diodos: 12 unidades
Vida útil 50000 horas

Tensión 12 V
Potencia 12 w
Flujo de luz 1200LM
Ángulo de dispersión de 170 grados

Maqueta del cielo



Combinado



La portada



El reverso



Fotos del proyecto terminado



www.artens.cl

**Saturnino Epulef, 1117, Local 7, Villarrica,
Teléfono fijo: 452 411 875**

**Catalogo
Cielos tensados
La impresión doble cara**